

Have a look around the museum and see what you can find...

1. Can you find these things in the London scene:

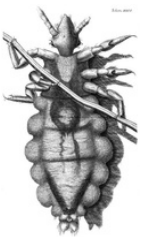
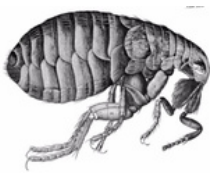
- i) a rat fleeing a ship
- ii) A dog (can you see what he's doing?!)
- iii) A man holding a burning torch

2. In what year did the brown rat come to England?



3. Who drank bacon fat which 'cured' her of the plague?

4. How many fleas & lice can you find in the box of tailor's materials?



5. What year is carved on the settle?

6. Who was the last person to die of the plague in Eyam?



8. What symptoms does John Daniel have?



9. Look for a gravestone - what is the name and date?

10. What year was the Eyam Cow Club founded?



10. What was the name of the man who was trapped down Black Engine Mine for a week?

11. What was the name of the person who wore the baby shoes?

12. What year are the child's shoes from?

